

Thank you for purchasing our Air box removal kit V1 ,V2 OR TVR.

Remember all Ruckus and Metropolitans are different and we have **included a 85 main and a 38 slow jet but you may need to go higher or lower jets depending on weather, altitude, other mods, exhaust, rider weight.** We sell more 85 jets than any other. This is not a PLUG AND PLAY operation. You will need to tune the carb by playing with the Idle Air screw, and reading your spark plug to see if you are running rich or lean after the mod. There are PDF Documents on our site for JET REPLACEMENT, SHIM INSTALLTION AND MORE.

Use the 85 jet and shim the needle first. If it still bogs you then use the 38 idle

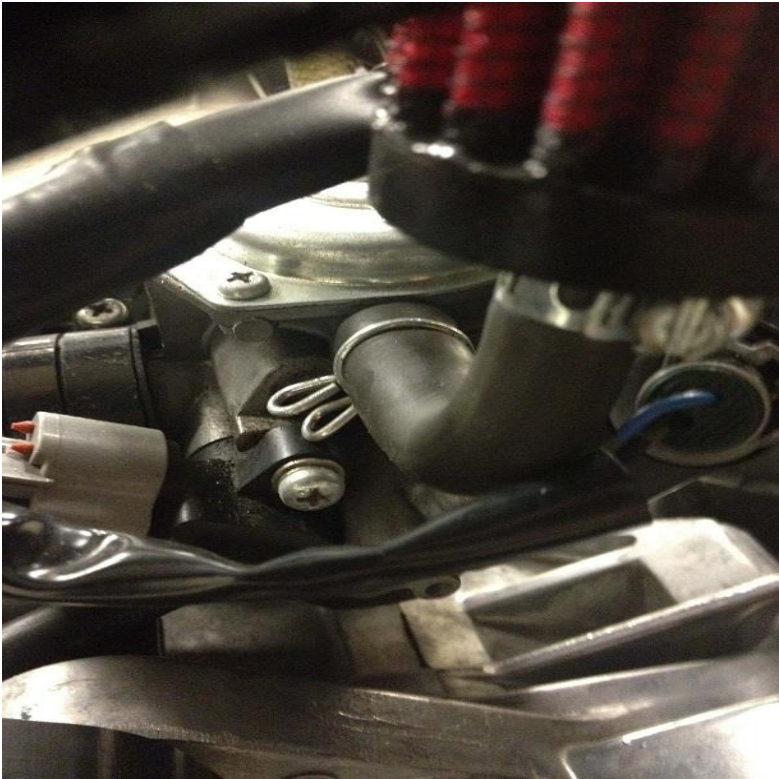
Installed Type 1 (Type 2 is same just with different filter)



TVR INTAKE INSTALLED

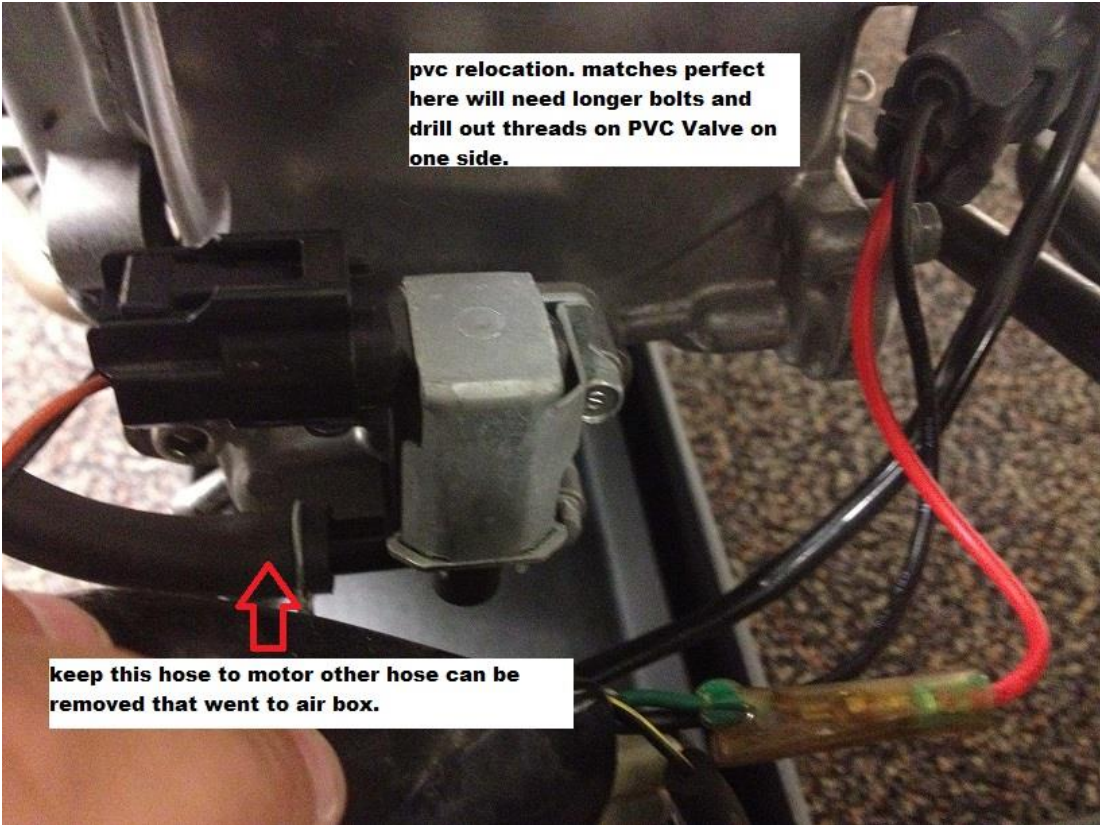


Only need 1 small filter for the diaphragm. You can use a piece of hose or clean oil inside of nipple and clamp on carb.



Use a piece of hose you removed from airbox for head over flow





pvc relocation. matches perfect here will need longer bolts and drill out threads on PVC Valve on one side.

keep this hose to motor other hose can be removed that went to air box.



Insert plug/ bolt and cut hose or one of our PAR block off plates